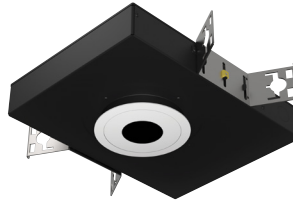


3" acrobat LED Pinhole Downlight - Warm Dimming

IC/CP Shallow New Construction Housing

Round or Square / Trimmed or Trimless



Wattage	CCT	Delivered Lumens	Efficacy
10W	1850 - 3000K	680lm	68lpw
15W	1850 - 3000K	945lm	63lpw

Lumens will vary depending on CCT, optic & lens option

Description

- Acrobat Air Tight IC/Chicago Pinhole downlight delivers over 900lm through a 2" pinhole with four optical distributions. Delivered lumens are maintained in different ceiling thicknesses.
- Ceiling access needed.

LED Light Engine

Warm dimming LED technology provides the natural sensation of circadian rhythm.

Field Replaceable Dimming Driver

- Power factor > 0.9, 50/60Hz
- Multiple dimming drivers available
- Complies with IEEE62.41 surge protection

Housing

18 gauge galvanized steel housing and junction box with 1/2" trade size knockouts. Includes universal butterfly brackets to accommodate C-Channel, adjustable bar hangers, and EMT. C-Channel is recommended for T-bar ceilings and must be ordered separately. Adjustable wood joist bar hangers are included. Max. ambient temperature: 104°F (40°C)

Ceiling Thickness

- Accommodates ceiling thickness from 1/2" to 1-1/4" (Extended 2" collar available, must specify)
- Delivered lumens are maintained through entire range

Trim Style

- Die-cast aluminum pinhole trim with powder coat finishes, consult factory for custom finishes
- Trimless mud plate and wood ceiling option available

Accessories

Accommodates (2) accessories, a media holder is required. Accessories are not compatible when used with lensed trim.

Emergency

Remote inverter operates for 90 minutes with remote test switch available, requires above ceiling access.

Listing/Warranty

- Patent pending
- Five (5) year limited warranty
- UL listed to US and Canadian standards for damp locations
- UL listed to US and Canadian standards for wet locations when used with lens
- Meets ASTM E283 standards
- CCEA approved - Chicago rated



Housing Order Matrix (Example: A3-SP10S-WD10-R00)

Installation Type	Wattage	Driver	LED Light Engine	Optic	Aperture	Trim Style	Rev	Extended Collar
A3-SP (IC/CP)	10 (10W) 15 (15W)	S ² (ERP, Universal Dim, Triac/ELV/0-10V 10% 120-277V)	-WD (Warm Dim)	10 (Spot)	-R (Round) -S (Square)	(blank) (Flanged)	00	(blank) (Standard 1-1/4")
		L1 ¹ (Lutron Hi-lume® 2-Wire 1% 120V)		30 (Narrow Flood)		TL (Trimless)		-2 (Up to 2")
	L2 ¹ (Lutron EcoSystem® 5% 120-277V)	50 (Flood)		WC (Wood Ceiling)				
	L3 ¹ (Lutron Hi-lume® Fade-to-Black 1% 120-277V)	80 (Wide Flood)						
	L4 ¹ (Lutron Hi-lume® 3-Wire 1% 120-277V)							
	EL1 ¹ (eldoLED DALI 1% 120-277V)							
	EL2 ¹ (eldoLED 0-10V 1% 120-277V)							
	DMX ¹ (DMX 1% 120-277V)							
	LR1 (Remote Lutron Hi-lume® 2-Wire 1% 120V)							
	SR1 (Remote ERP, Universal Dim, Triac/ELV/0-10V 10% 120-277V)							

- Ceiling access required
- Forward and reverse phase dimming at 120V only

Trim Order Matrix (Example: A3-3RWH-WH10-NL-00)

Trim	Aperture	Pinhole Finish	Flange Finish	Lens Type	Rev
A3-3	R (Round)	WH (White)	(blank) (Trimless / Wood Ceiling)	-NL (No Lens - damp location)	-00
	S (Square)	BL (Black)	-WH (White)	-FR (Frosted - wet location)	
		SA (Satin Aluminum)	-BL (Black)	-MP (Solite - wet location)	
		BZ (Bronze)	-SA (Satin Aluminum)	-CL (Clear - wet location)	
			-BZ (Bronze)		

Accessories (Note: Media holder required)

A3-MHLDR (Media Holder- required)
 A3-HEX (Hex Louver)
 A3-FR (Frosted Lens)
 A3-MP (Solite Lens)
 A3-CL (Clear Lens)
 A3-LS (Linear Spread Lens)

C-Channel Bar Hangers

LCB-27 (27" C-Channel)
 LCB-52 (52" C-Channel)

Optics

A3-10-OPTIC (10° Spot)
 A3-30-OPTIC (30° Narrow Flood)
 A3-50-OPTIC (50° Flood)
 A3-80-OPTIC (80° Wide Flood)

Emergency

EM-1000 (25W LED Remote Inverter)
 EM-1002 (10W LED Remote Emergency Driver)
 EM-1003 (35W LED Remote Inverter)
 EM-1004 (50W LED Remote Inverter)

3" acrobat LED Pinhole Downlight - Warm Dimming

IC/CP Shallow New Construction Housing

Round or Square / Trimmed or Trimless

Catalog #:

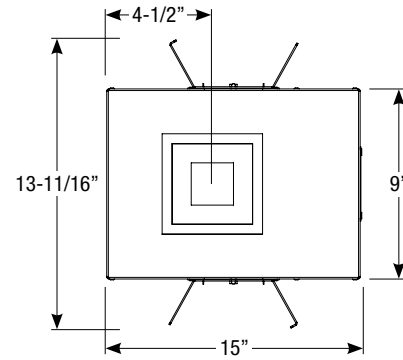
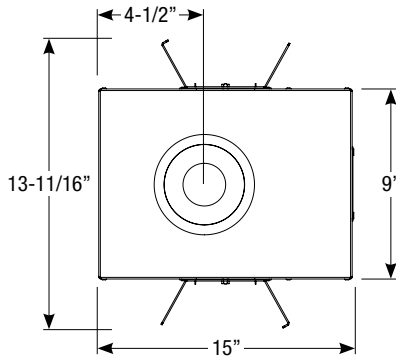
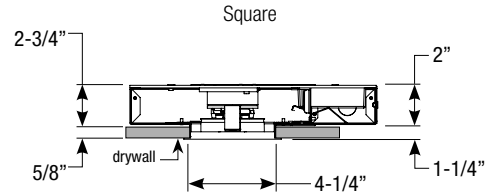
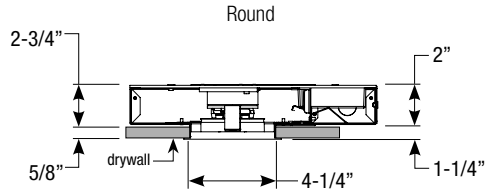
Type:

Project:

Date:

Notes:

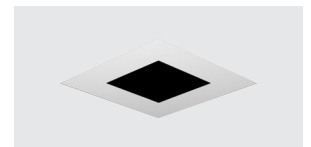
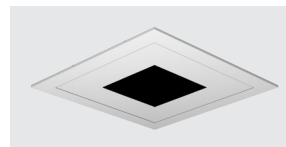
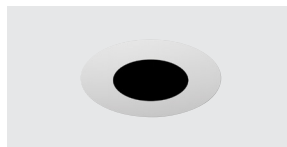
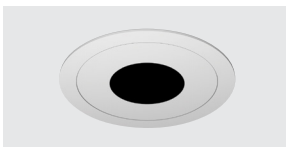
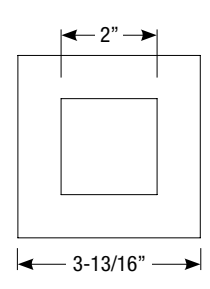
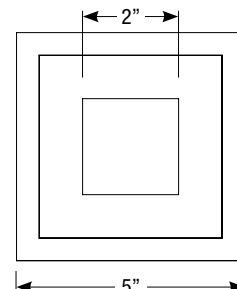
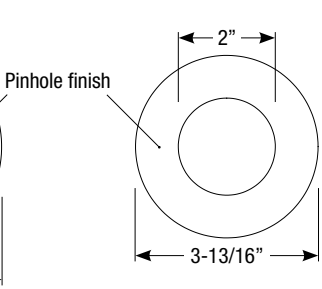
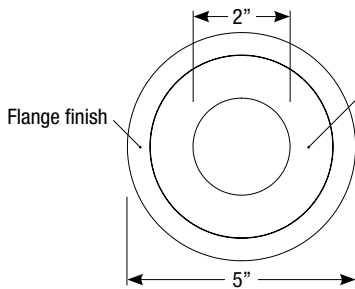
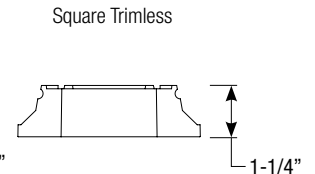
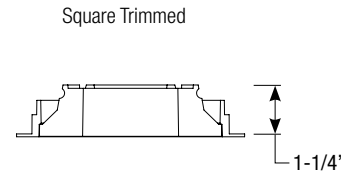
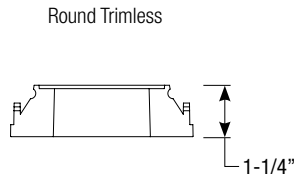
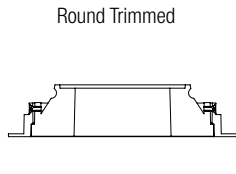
Housing Dimensions



Ceiling Cut-out: 4-3/8" Ø

Ceiling Cut-out: 4-3/8" x 4-3/8"

Trim Dimensions



Revised 10/24/18